



## CLS60 Plus - Real Time 3-D Color Laser Sensor

CLS60 is world's first arm-mounted real-time 3-D color laser sensor. Shape and texture information are acquired simultaneously as sensor is moved about the object.

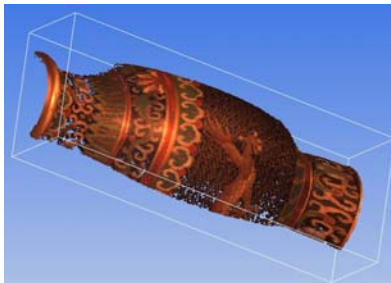
A breakthrough in scanning technology, CLS60 Plus is highly accurate, fast, light-weight and compact.

The sensor connects directly to FireWire ports and is hardware independent. CLS60 Plus is compatible with MicroScribe 6DOF and 5DOF digitizing arm models. The unit is also compatible with Romer digitizing arms. Existing units can be quickly in-field retrofitted. Easily adapts to motorized stages.

On-screen live color video display helps user aim the sensor as desired, collecting data with un-compromised resolution while shortening out scanning time. Deep working range allows comfortable manipulation.

Color point clouds export to a variety of point cloud processing packages quick and simply. CLS60 Plus is also a price-barrier breaker. Attractively priced, packs professional performance, functionality and affordability.

CLS60 Plus is the ideal tool for content creation, research, heritage preservation, visualization, reverse engineering and inspection.



### Features:

- Acquisition of shape with color per each sample point
- Real-time shading
- Automatic alignment.
- Real-time exposure adjustment to surface reflectivity
- Real-time noise filtering
- Registration workbench for manual mark and fine align
- On-screen 3-D measurements
- Direct connectivity
- Solid-state, palm-sized, light-weight
- On-board control buttons, power and range lights alerts
- Works with Romer and MicroScribe (5&6 DOF) digitizing arms
- Editing functionality
- Fast and easy export of point clouds
- Desktops and laptops operation

### Specifications:

- 30,720 points per second
- Accuracy 0.0015" (0.038mm)
- 670um laser projector, power <1mW
- Point to point distance (min): 0.0028" (70um)
- Working range: 3.5"-15" (89 - 378mm)
- Laser line: Near 64mm; Middle 135mm; Far 200mm
- Weight 1.5lb (700g)
- Dimensions 5.75 x 5.5 x 1.5"(2.5") (140x133x38mm)
- Operating condition 34° - 104°F ( 0°- 45°C)
- Platform: XP Pro, SP2; 3GHz CPU, 1GB DDR

